

LP-PK Data sheet

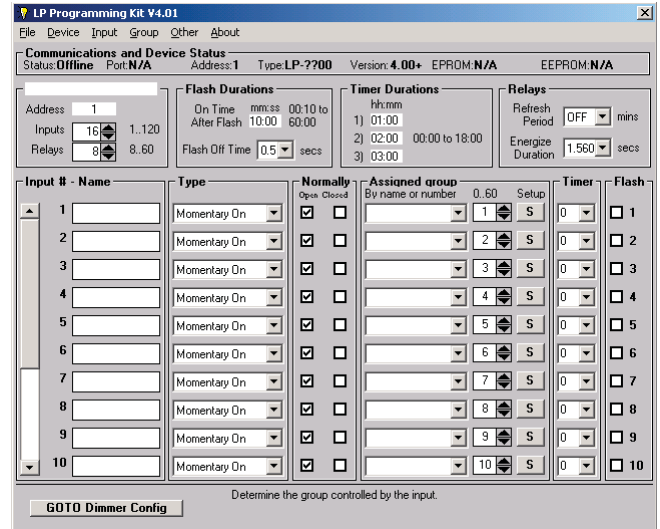
Panel Set-Up Software

For:

- TLC L35 Series Lighting Control Panels
- TLC L28 Series Lighting Control Panels
- TLC L28 DRC - Distributed Room Controllers
- TLC L26 Series Lighting Control Panels



Panel Set-Up Software



Overview

Turnkey Lighting Control's LP-PK Programmers Kit provides the capability to program Turnkey Lighting Control Control Panels or Programmable Circuit Breaker Panel from a laptop or PC. LP-PK allows you to assign relays to groups as well as assigning your inputs to a particular group. LP-PK Set-Up Software provides an additional means for programming including storing data to diskette, reading data and entering data from diskette.

Specifications

PC Hardware Requirements

An unused serial port (COM1, COM2, COM3, or COM4)

PC Software Requirements

Windows 98 or better Operating System

LP/RCS Hardware Requirements LP/RCS

RS-485 capability

Software Requirements

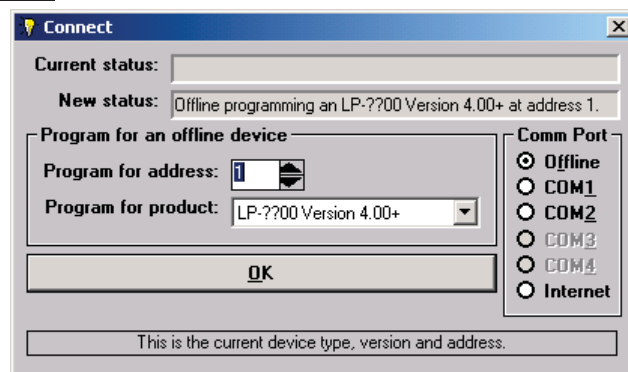
Version 1.07 or higher

Ordering Instructions LP PK 4.03 or higher

* Laptop cable with 9 pin DB connector is included

Typical Displays

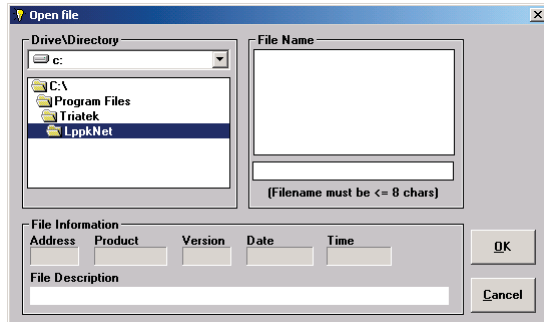
Main Display



This screen allows you to open a Turnkey Lighting Control Panel *.LPX file. With file information displayed for the file highlighted, you can review the general information before opening.

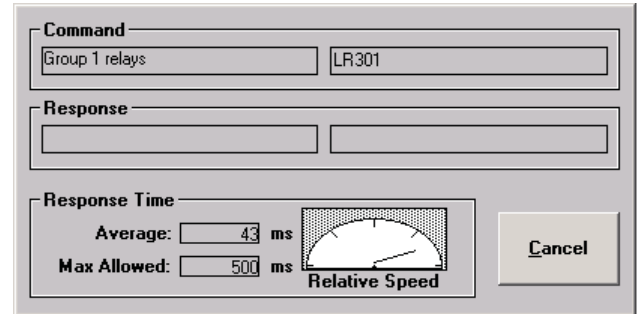
Typical Displays (Con't)

Open File



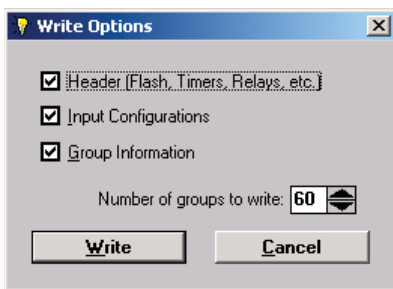
This screen provides the capability to set up communications and addressing of the Lighting Panels

Panel Read Status



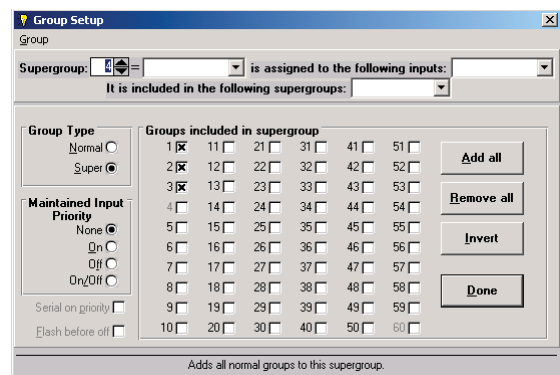
This screen is displayed while you are reading information from a panel

Panel Write Options



This screen is displayed when you want to write information to a panel.

Zone Information



The Zone Information Screen provides the capability to select the relays in the zone, the zone type, zone priority and serial priority.